

INTER-AGENCY CONNECTEDNESS

In the Government's response to
the Canterbury earthquakes of
2010 and 2011

THE EARTHQUAKES

- 4 September 2010 7.1 magnitude 40km west 10km deep
- 22 February 2011 6.3 magnitude 10km from city 5km deep
- 13 June 2011 6.4 magnitude 10km east 7km deep
- 23 December 2011 6.0 magnitude 10km east 7km deep

4558 aftershocks of 3.0 magnitude or above over the four years

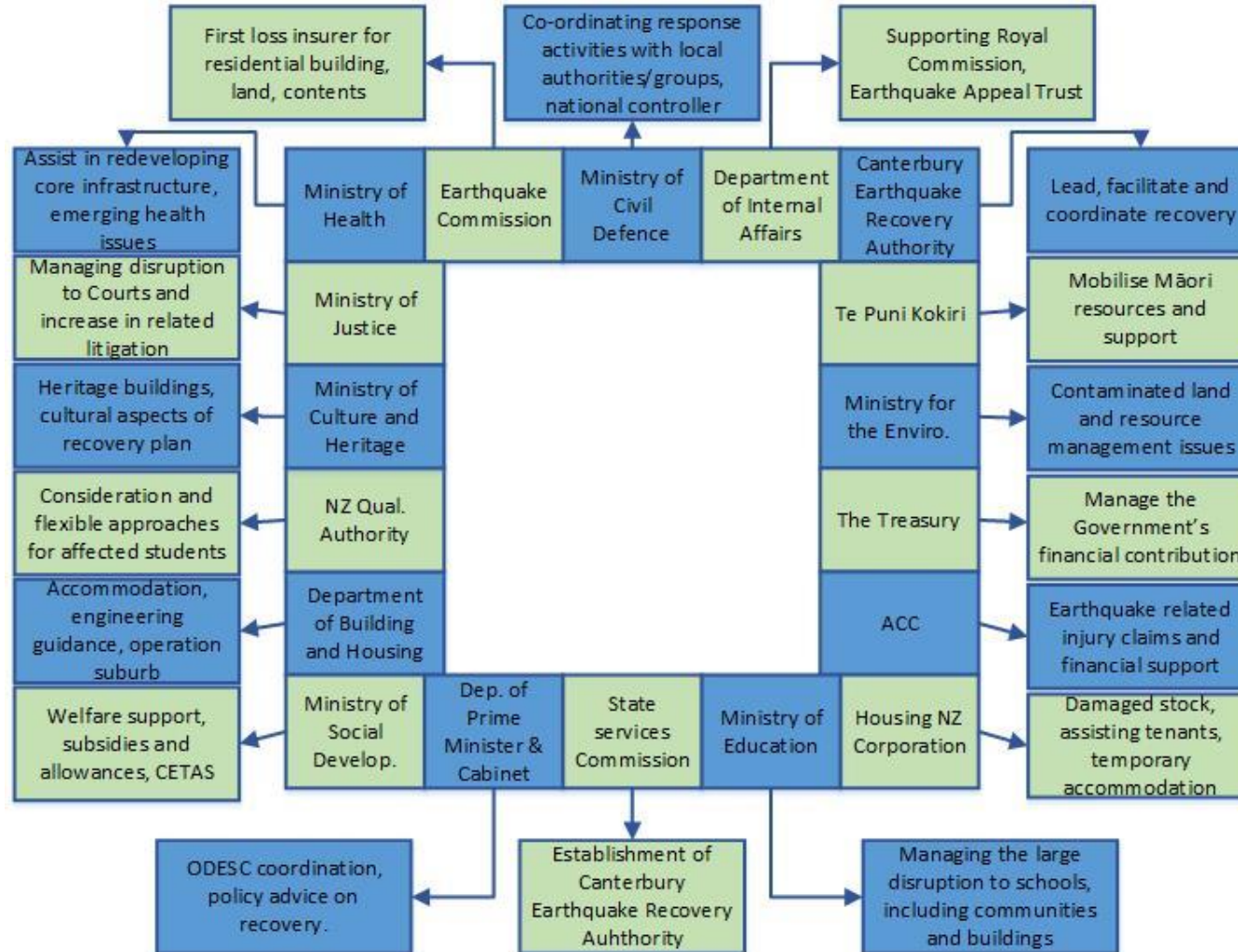
SOME OF THE IMPACTS

- More than 100,000 **homes damaged**, many beyond repair
- More than half the buildings in the **CBD severely damaged**
- 8 million tonnes of **rubble and waste** from buildings
- Thousands of tonnes of **liquefaction silt** removed
- 46% of **urban sealed roads** affected; 895 km need rebuilding
- 124km of **water mains** and 300km of **sewer pipes** damaged
- 50,000 **employees** initially displaced

Treasury estimates capital cost of \$40 billion (20% of NZ GDP)



THE AGENCIES



CONNECTEDNESS - BENEFITS

BENEFITS

- Reduces risk of duplication
- Best ensures consistency in decision-making
- Identify and utilise capabilities across agencies



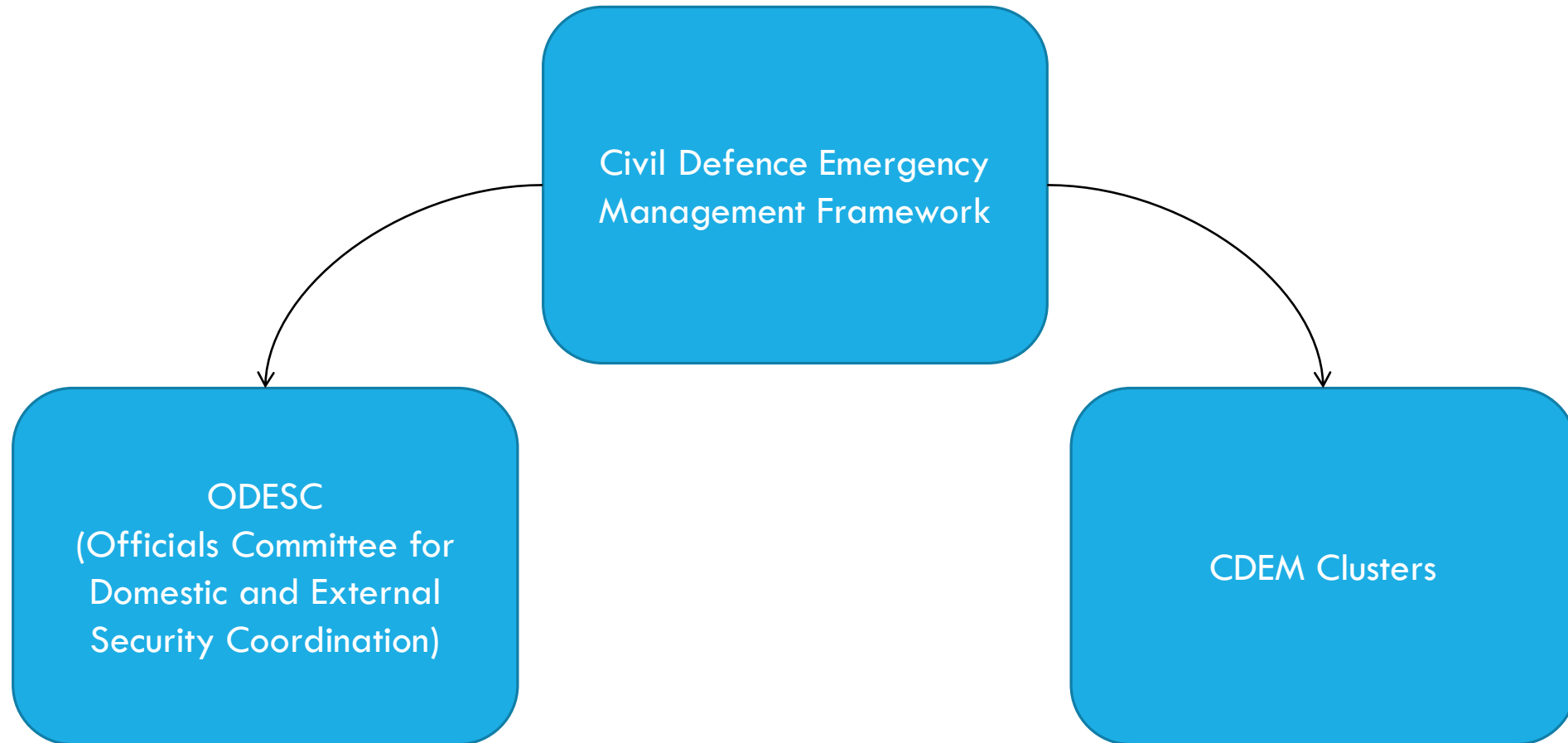
CONNECTEDNESS - CHALLENGES

CHALLENGES

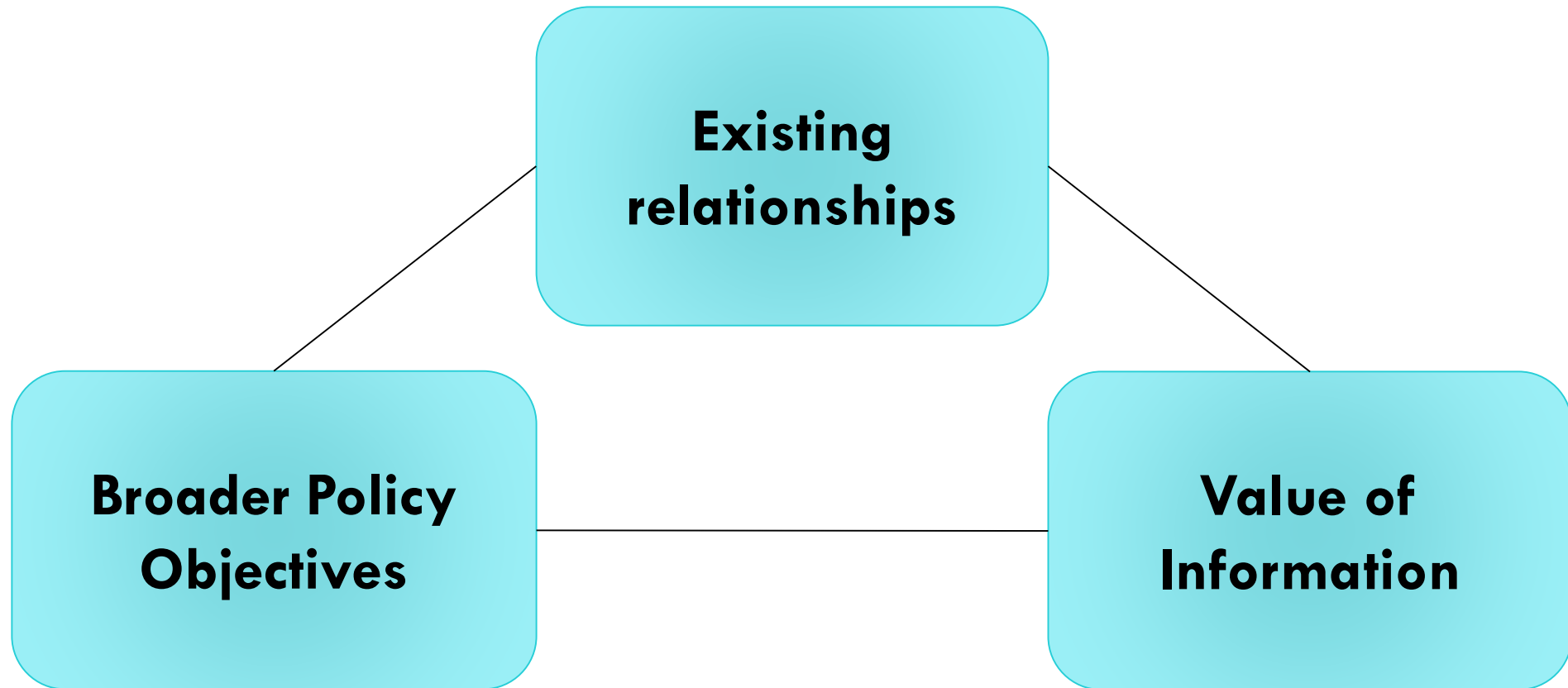
- The pace of decision making
- All of the unknowns around role identification
- The structure and divisions across the sector



PRESCRIBED CONNECTEDNESS PRIOR TO CANTERBURY



KEY OBSERVATIONS FROM CANTERBURY



CASE 1: THE CHIMNEY REPLACEMENT PROGRAMME

Who?

- Energy Efficiency and Conservation Authority
- Earthquake Commission
- Fletcher EQR

What?

- Replace old log burners or open fires with new, efficient heaters
- Cost covered by EQC claim for damage to chimney (and fireplace)

When?

- Announcement 11 days after first earthquake

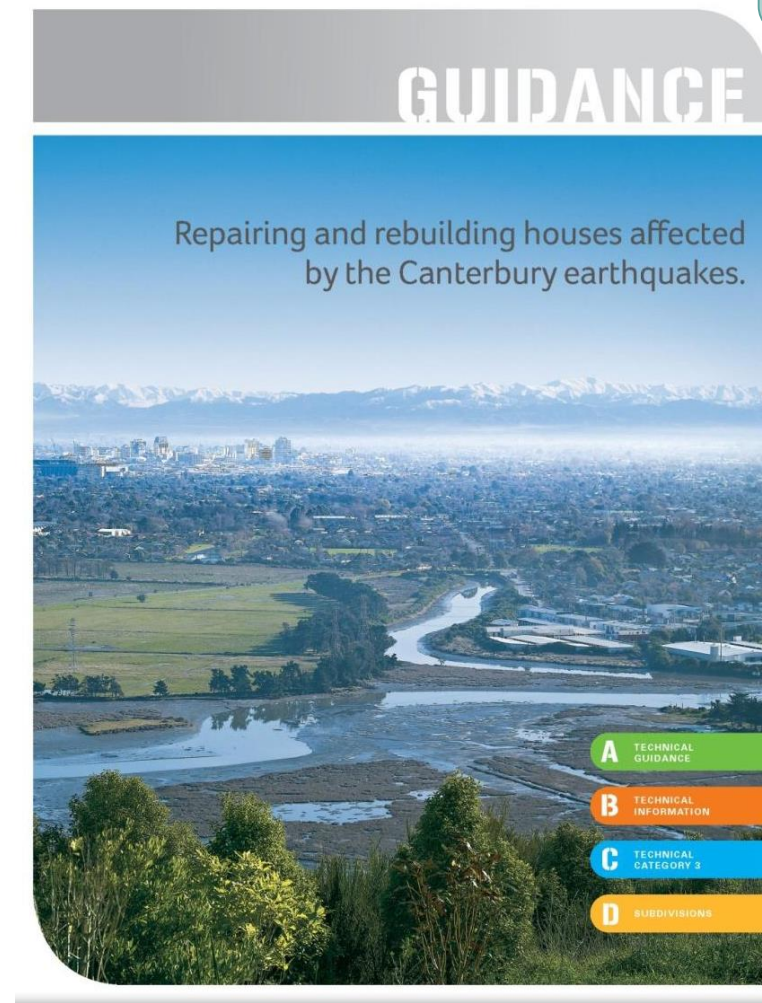


EQC

EECA

CASE 2: ENGINEERING ADVISORY GROUP

- Three main purposes:
 - Provide guidance on engineering requirements and regulatory processes for assessing damage and specifying repairs
 - Facilitate interaction between engineers, EQC, commercial insurers, CERA, Christchurch, Selwyn, Waimakariri Councils on engineering requirements and regulatory issues and processes
 - Convey engineering requirements for various repair and reconstruction options to the insurance, design, and construction sectors.
- Originally sponsored by EQC but now sits within Ministry of Business, Innovation and Employment.
- Royal Commission recommended it become an on-going function, accepted by government.



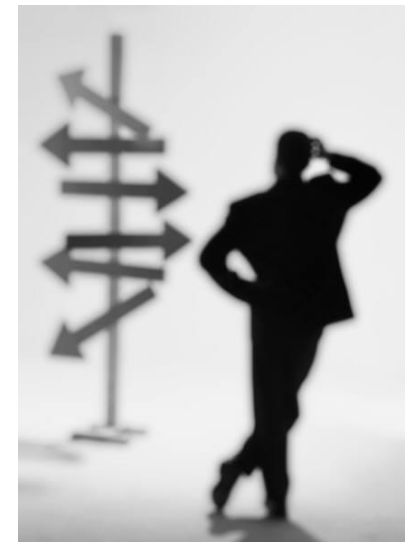
CASE3: TEMPORARY ACCOMMODATION

- **Stage 1:** Immediate— 350 campervans from private companies at Canterbury Agricultural Park.
- **Stage 2:** Imminent – Temporary Accommodation Villages at Kaiapoi Domain, Linwood Park, Rawhiti Domain let through CETAS.
- **Stage 3:** Temporary Housing – Proposed Rangers Park development – a permanent housing subdivision.
- CERA Orders in Council, multiple agency involvement, unprecedented role.



REVISITING THE EXPERIENCE

- Review across government agencies
- The high-level policy question
- Principles for planning:
 - Networks and relationships
 - Existing capability and capacity
 - The value of information



TOWARDS A CONNECTEDNESS FRAMEWORK

